

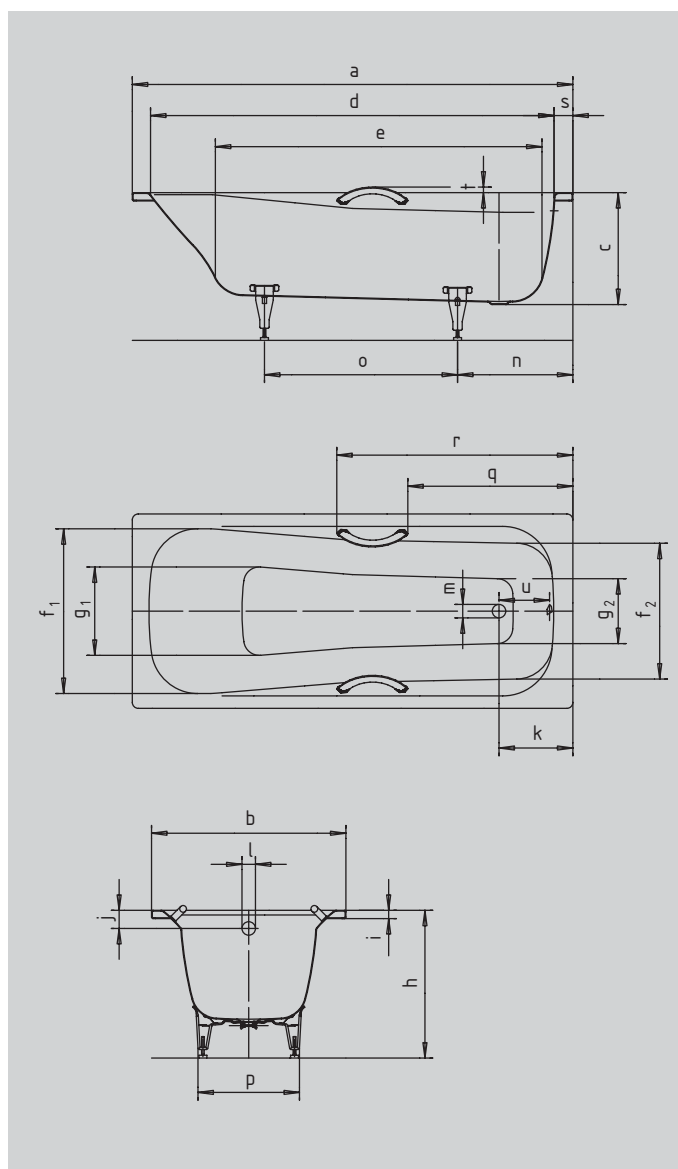
# DYNA

## DYNA STAR

- one-seater bathtub with waste at foot end
- economic water consumption thanks to its tapering interior contours
- made of Kaldewei steel enamel 3.5 mm
- also available with handles



Similar illustration



Model No.		393 / 394
External length	a	1700 mm
External width	b	750 mm
Depth	c	430 mm
Internal length (top)	d	1575 mm
Internal length (bottom)	e	1230 mm
Internal width (top)	f <sub>1</sub> ; f <sub>2</sub>	640; 530 mm
Internal width (bottom)	g <sub>1</sub> ; g <sub>2</sub>	500; 380 mm
Height with feet	h	550-570 mm
Height of rim	i	32 mm
Distance top edge to centre of overflow hole	j	70 mm
Distance tub edge to centre of drain hole	k	285 mm
Diameter of overflow hole	l	52 mm
Diameter of drain hole	m	52 mm
Distance foot end of tub edge to centre of foot	n	445 mm
Distance between the feet	o	745 mm
Max. width of feet	p	390 mm
Distance tub edge (foot end) to where handle starts (Mod. 394/631)	q	666,5 mm
Distance tub edge (foot end) to where handle ends (Mod. 394/631)	r	940,5 mm
Width of rim (foot end)	s	70 mm
Handle overhang	t	25 mm
Distance between centre holes	u	209 mm
Water volume** in litres		124
Weight of the enamelled bath tub in kg		56
Anti-slip		Ø 288 mm
Full anti-slip		900 x 300 mm

Subject to technical alterations, tolerances and errors. Similar illustration.  
 \*\* 70 litres displacement on average.

**KALDEWEI**  
 Europe's No. 1 for baths